

117-119 ESSEX ROAD,
LONDON, N1





Detail number → **XXX**
 Drawing number → **XX**

Section C-C
 drg. 005

Section B-B
 drg. 004

Section A-A
 drg. 003

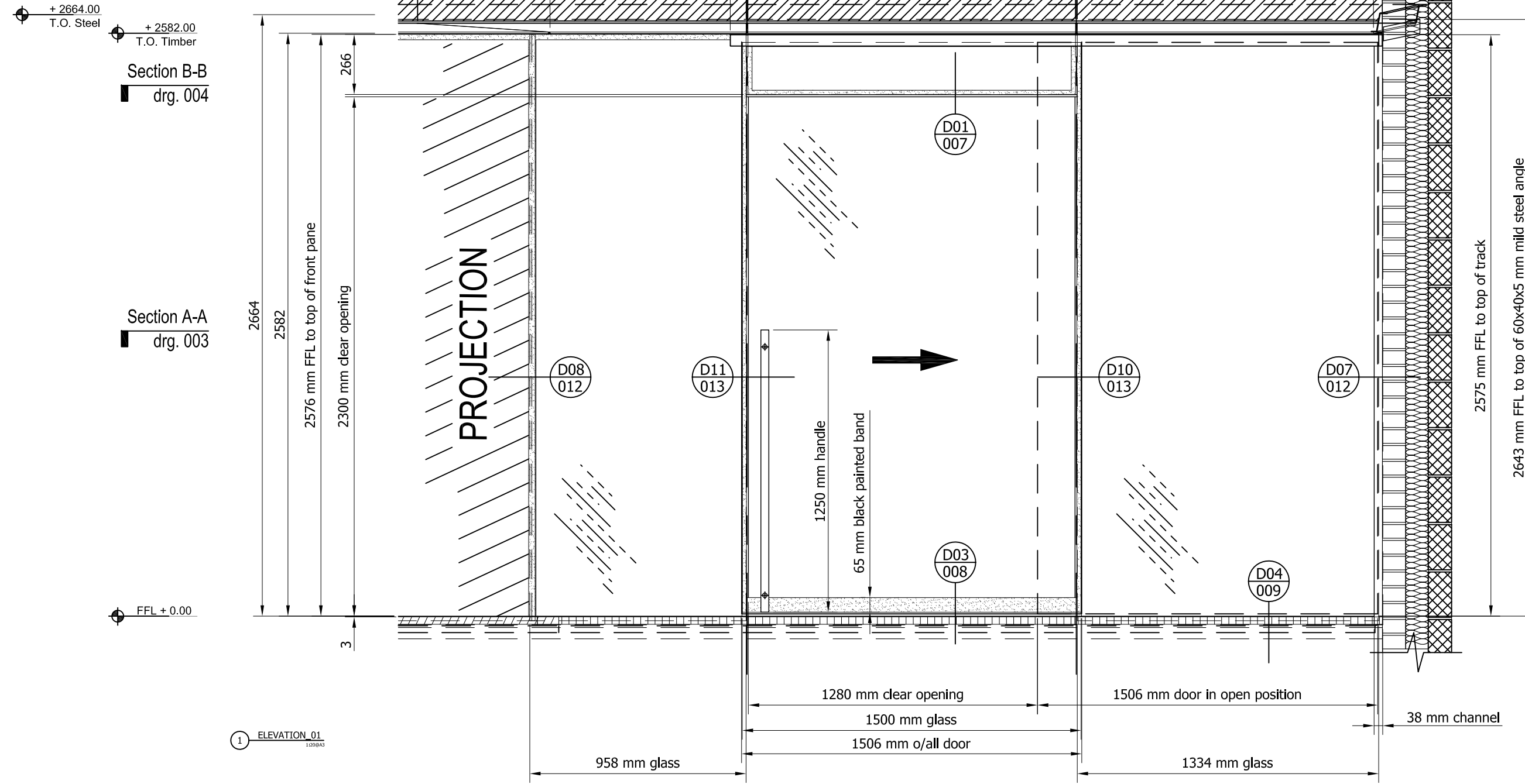
Section C-C
 drg. 005

Section B-B
 drg. 004

Section A-A
 drg. 003

+ 2664.00
 T.O. Steel

+ 2582.00
 T.O. Timber



1 ELEVATION 01
 1:20@A3

SIZES ARE SUBJECT TO SITE SURVEY OR DETERMINED FROM AGREED STRUCTURAL OPENING DIMENSIONS PROVIDED BY MAIN CONTRACTOR.

ALL STRUCTURAL GROUNDS TO BE PREPARED BEFORE INSTALLATION.

PROJECT/SITE ADDRESS: 119 Essex road, London N1	'GH Interior Glass ltd'	REVISIONS	DATE 14/11/16	DRAWN by D.Z.
			CHECKED by Project M.	
TEL:			SCALE 1:20@A3	REV.
FAX:			DRAWING REF. 001	
			DRAWING TITLE Glass box elevation - 01	
			DRAWING STATUS	APPROVAL

Note: CDM regulations will apply to status approval of drawings and manufacture will only commence on receipt of 'A' status approval of drawings issued.

C = TO BE AMENDED - Drawings to be resubmitted.
 B = APPROVED WITH AMENDMENTS - Drawings to be resubmitted with final amendments included.
 A = APPROVED FOR PRODUCTION, NO COMMENTS - Procurement of materials, manufacture and installation to commence.

Detail number → **XXX**
 Drawing number → **XX**

Section C-C
 drg. 005

Section C-C
 drg. 005

Section B-B
 drg. 004

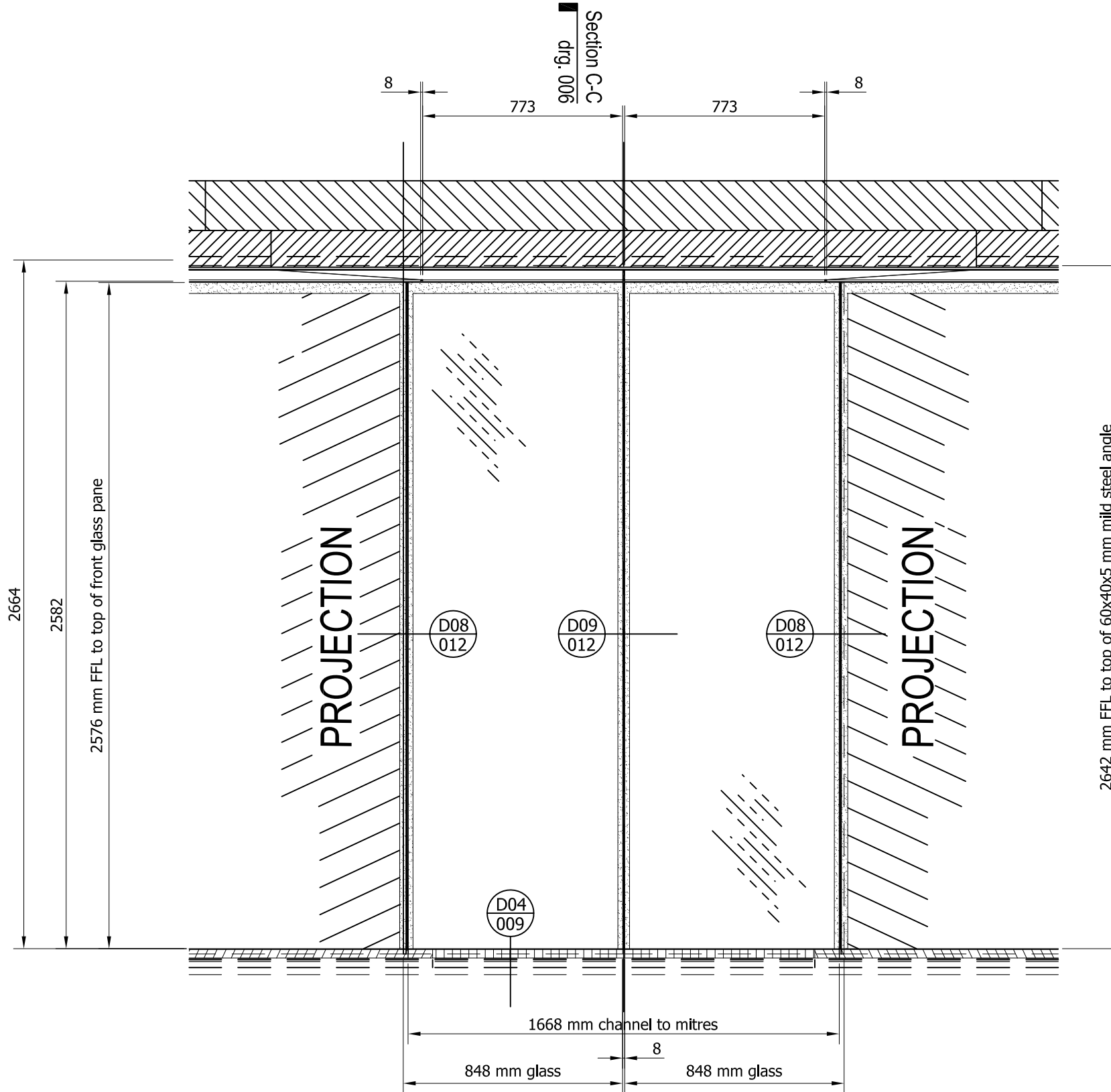
Section B-B
 drg. 004

Section A-A
 drg. 003

Section A-A
 drg. 003

+2664.00
 T.O. Steel
 +2582.00
 T.O. Timber

FFL + 0.00



NOTES:

2 ELEVATION_02
 1:20@A3

Glass:
 6 mm clear toughened HST (heat soak tested) solar control SN 70/40 - 20 mm spacer, argon filled - 6 mm clear toughened soft coat low 'E';
 6 mm clear toughened HST (heat soak tested) - 32 mm spacer - 6 mm clear toughened 'K' glass sliding door;

Metalwork:
 50x38x3 mm aluminium extruded jamb and bottom channels, PPC to RAL 9004 (30 % gloss);
 50x50x3 mm aluminium extruded reversed bottom channels, PPC to RAL 9004 (30 % gloss);
 63x25x3 mm aluminium extruded reversed bottom channels, mill finish;
 60x40x5 mm mild steel roof support angle, primed, front visible edge PPC to RAL 9004 (30 % gloss);
 2 mm thick folded roof glass pressing and bottom cill, PPC to RAL 9004 (30 % gloss);
 32x9.5 mm aluminium block, PPC to RAL 9004 (30 % gloss);
 63x50 mm sliding door top track, PPC to RAL 9004 (30 % gloss);
 63x13 mm sliding door bottom track, mill finish;

PROJECT/SITE ADDRESS:

119 Essex road,
 London N1

'GH Interior Glass ltd'

REVISIONS

DATE 14/11/16 DRAWN by D.Z.

CHECKED by Project M.

SCALE 1:20@A3 REV.

DRAWING REF.

002

DRAWING TITLE

Glass box elevation - 02

DRAWING STATUS

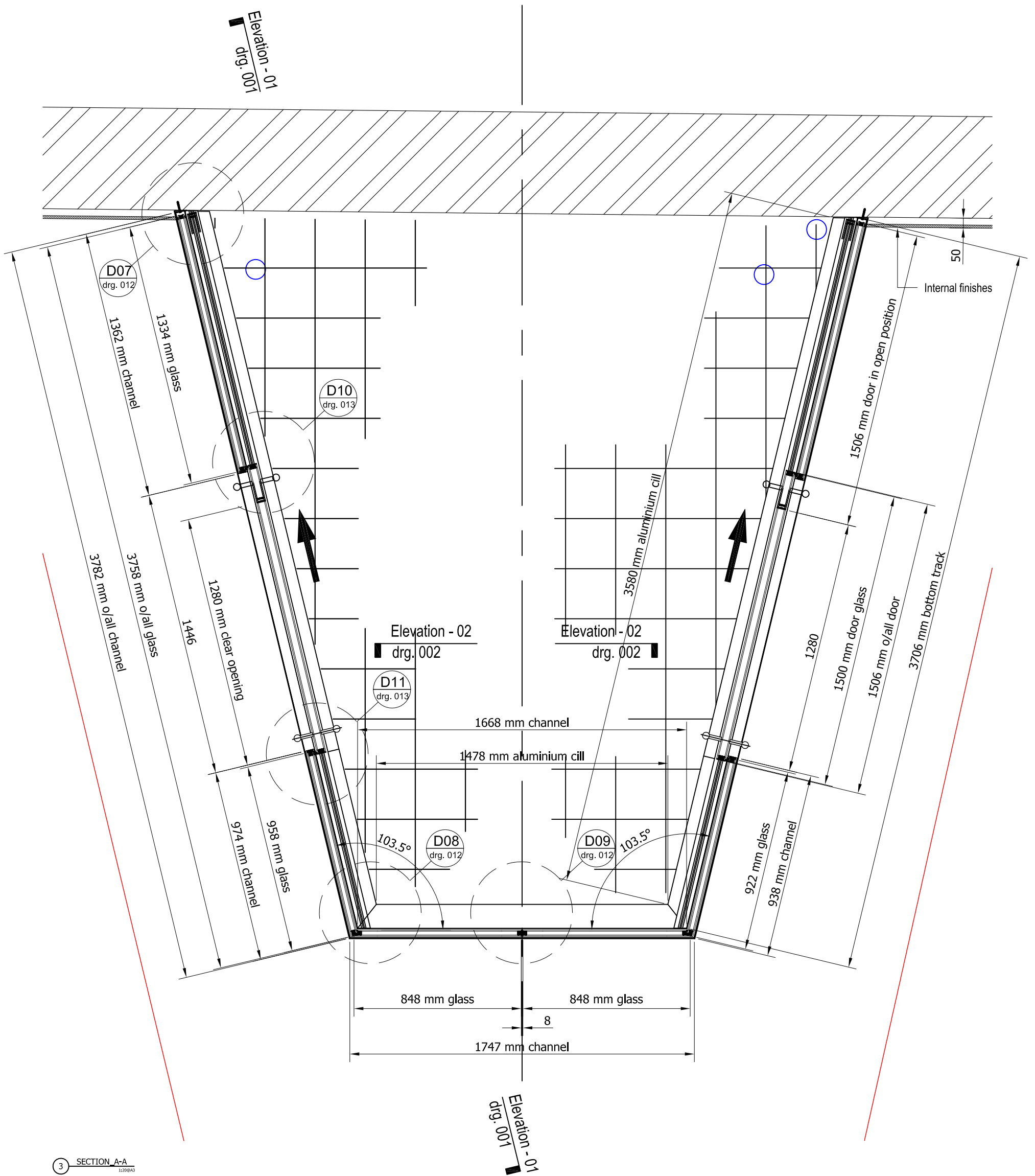
APPROVAL

Note: CDM regulations will apply to status approval of drawings and manufacture will only commence on receipt of 'A' status approval of drawings issued.
 C = TO BE AMENDED - Drawings to be resubmitted.
 B = APPROVED WITH AMENDMENTS - Drawings to be resubmitted with final amendments included.
 A = APPROVED FOR PRODUCTION, NO COMMENTS - Procurement of materials, manufacture and installation to commence.

TEL:

FAX:

Detail number → **XXX**
 Drawing number → **XX**



3 SECTION A-A
1:20@A3

© COPYRIGHT & DESIGN
 COPYRIGHT & DESIGN RIGHT 2008

PROJECT/SITE ADDRESS:
 119 Essex road,
 London N1

'GH Interior Glass Ltd'

REVISIONS

DATE 14/11/16 DRAWN by D.Z.
 CHECKED by Project M.
 SCALE 1:20@A3 REV.

DRAWING REF.
003

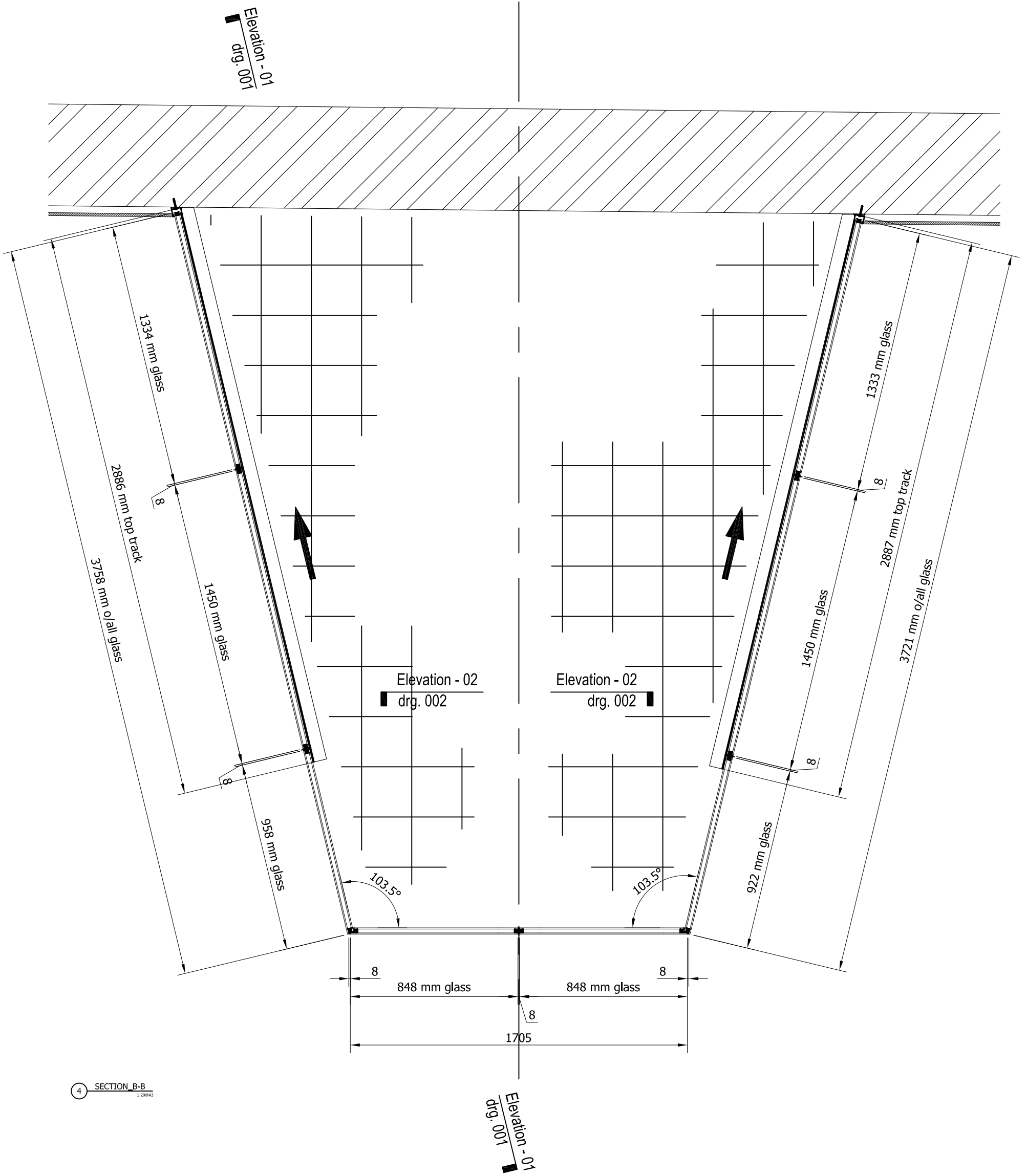
DRAWING TITLE
Section A-A

TEL:
 FAX:

Note: CDM regulations will apply to status approval of drawings and manufacture will only commence on receipt of 'A' status approval of drawings issued.
 C = TO BE AMENDED - Drawings to be resubmitted.
 B = APPROVED WITH AMENDMENTS - Drawings to be resubmitted with final amendments included.
 A = APPROVED FOR PRODUCTION, NO COMMENTS - Procurement of materials, manufacture and installation to commence.

DRAWING STATUS Approval

Detail number → **XXX**
 Drawing number → **XX**



SECTION B-B
1:20@A3

© COPYRIGHT & DESIGN
COPYRIGHT & DESIGN RIGHT 2008

PROJECT/SITE ADDRESS:
119 Essex road,
London N1

'GH Interior Glass Ltd'

REVISIONS

Note: CDM regulations will apply to status approval of drawings and manufacture will only commence on receipt of 'A' status approval of drawings issued.
 C = TO BE AMMENDED - Drawings to be resubmitted.
 B = APPROVED WITH AMENDMENTS - Drawings to be resubmitted with final amendments included.
 A = APPROVED FOR PRODUCTION, NO COMMENTS - Procurement of materials, manufacture and installation to commence.

DATE 14/11/16 DRAWN by D.Z.

CHECKED by Project M.

SCALE 1:20@A3 REV.

DRAWING REF.

004

DRAWING TITLE

Section B-B

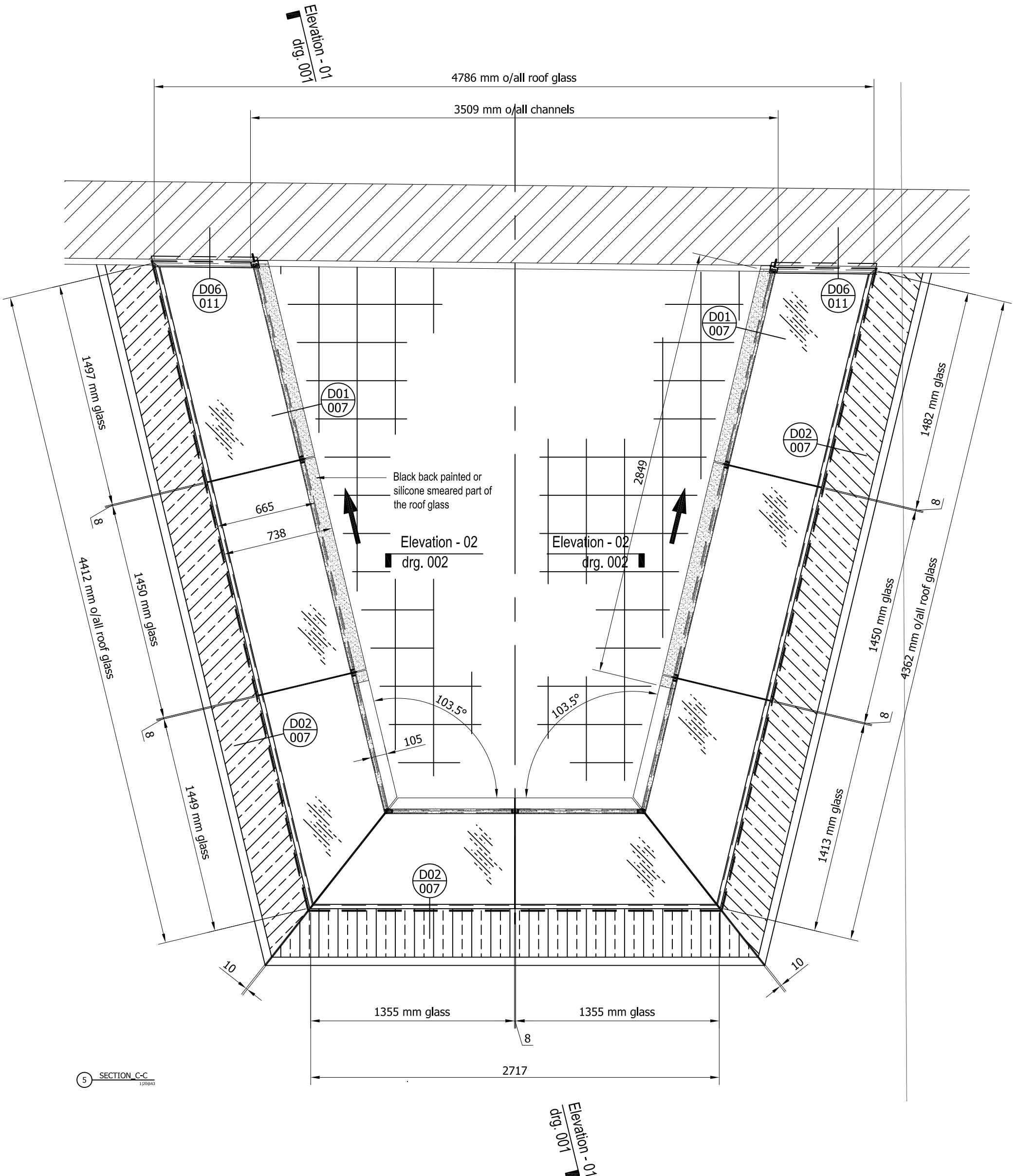
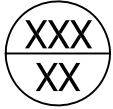
DRAWING STATUS

Approval

TEL:

FAX:

Detail number →
Drawing number →



© COPYRIGHT & DESIGN
COPYRIGHT & DESIGN RIGHT 2008

PROJECT/SITE ADDRESS:
119 Essex road,
London N1

TEL:
FAX:

'GH Interior Glass Ltd'

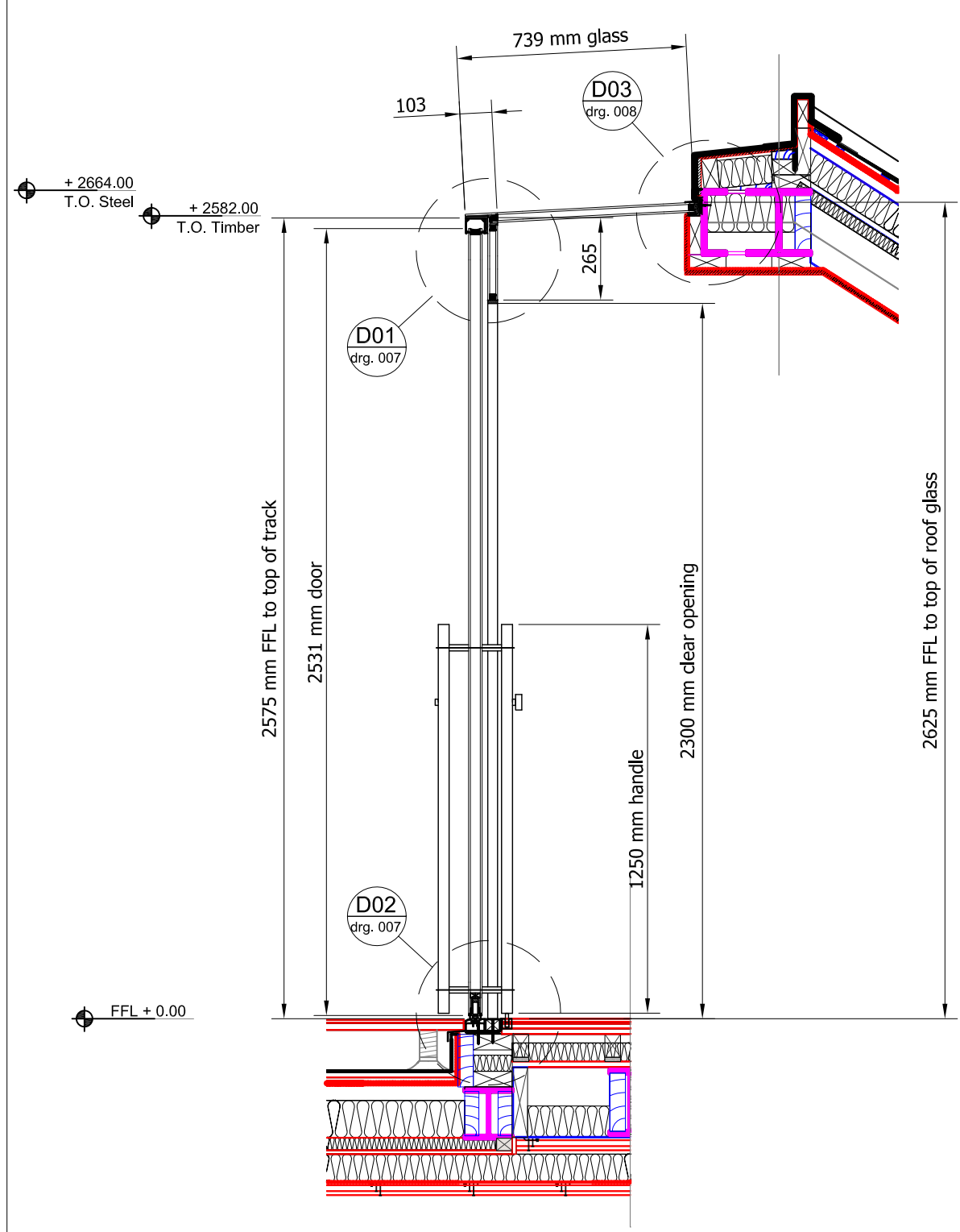
REVISIONS

Note: CDM regulations will apply to status approval of drawings and manufacture will only commence on receipt of 'A' status approval of drawings issued.

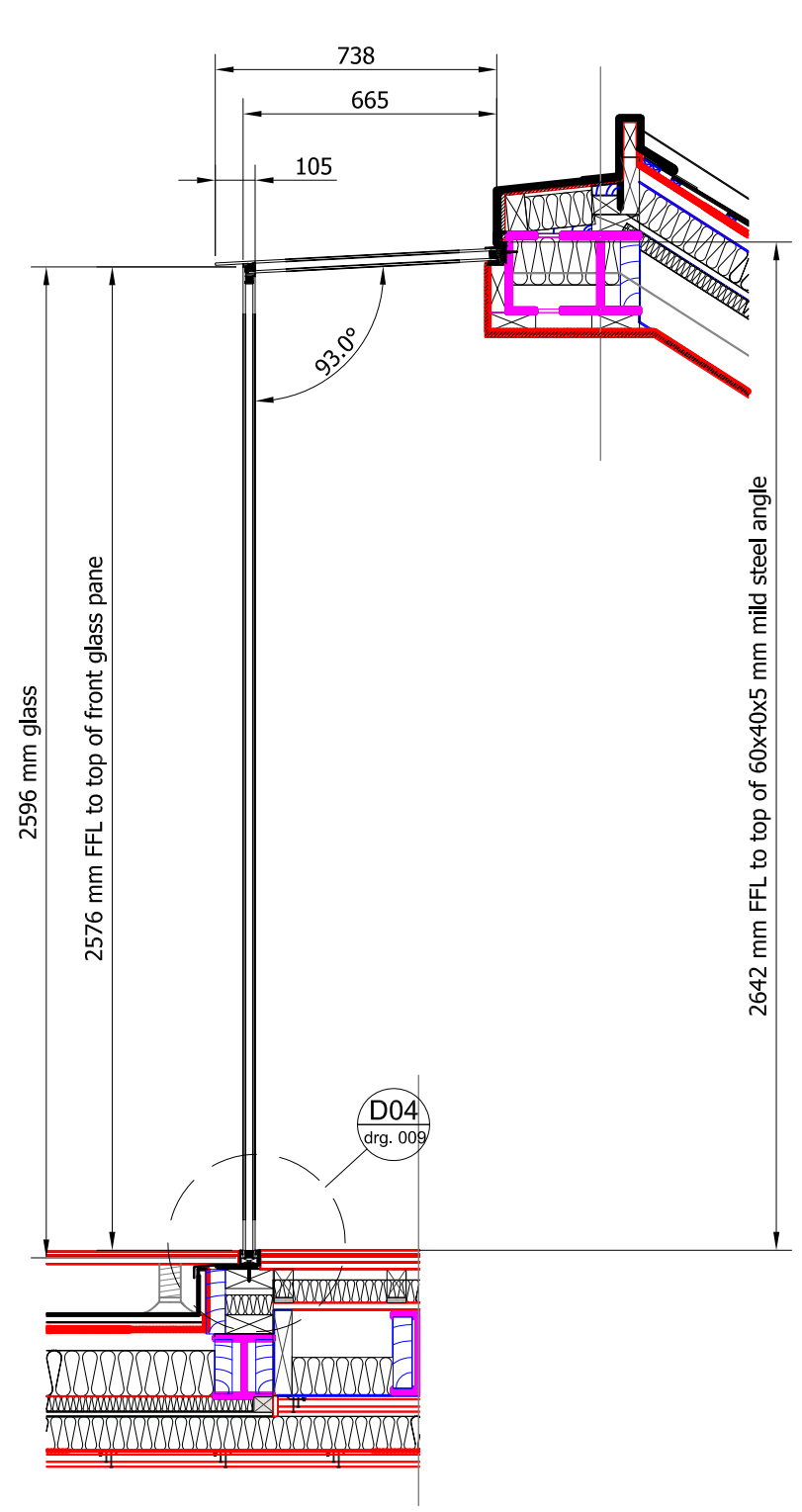
C = TO BE AMENDED - Drawings to be resubmitted.
B = APPROVED WITH AMENDMENTS - Drawings to be resubmitted with final amendments included.
A = APPROVED FOR PRODUCTION, NO COMMENTS - Procurement of materials, manufacture and installation to commence.

DATE 14/11/16	DRAWN by D.Z.
CHECKED by Project M.	
SCALE 1:20@A3	REV.
DRAWING REF.	
005	
DRAWING TITLE	
Section C-C	
DRAWING STATUS	Approval

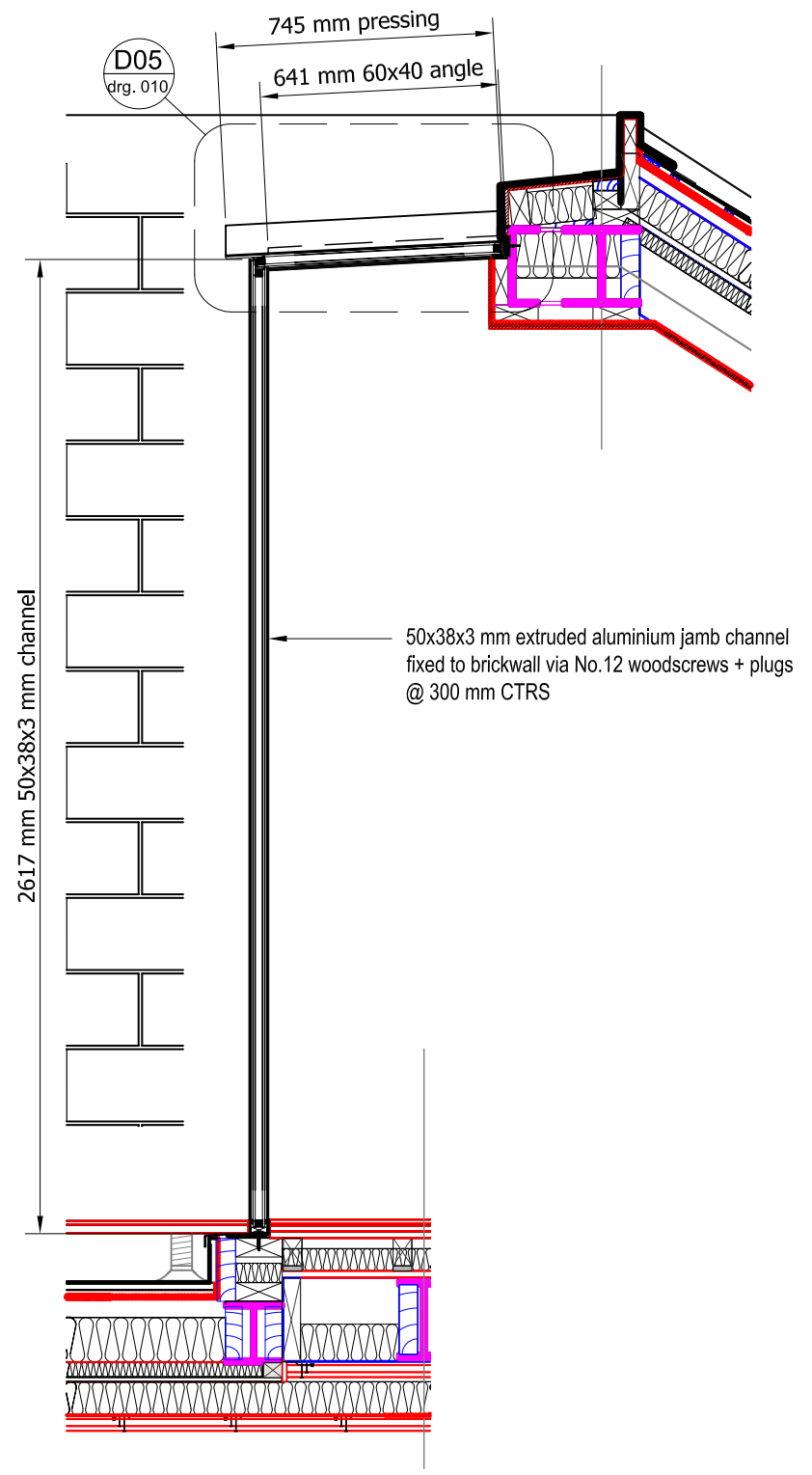
Detail number → **XXX**
 Drawing number → **XX**



6 SECTION D-D
1:20@A3



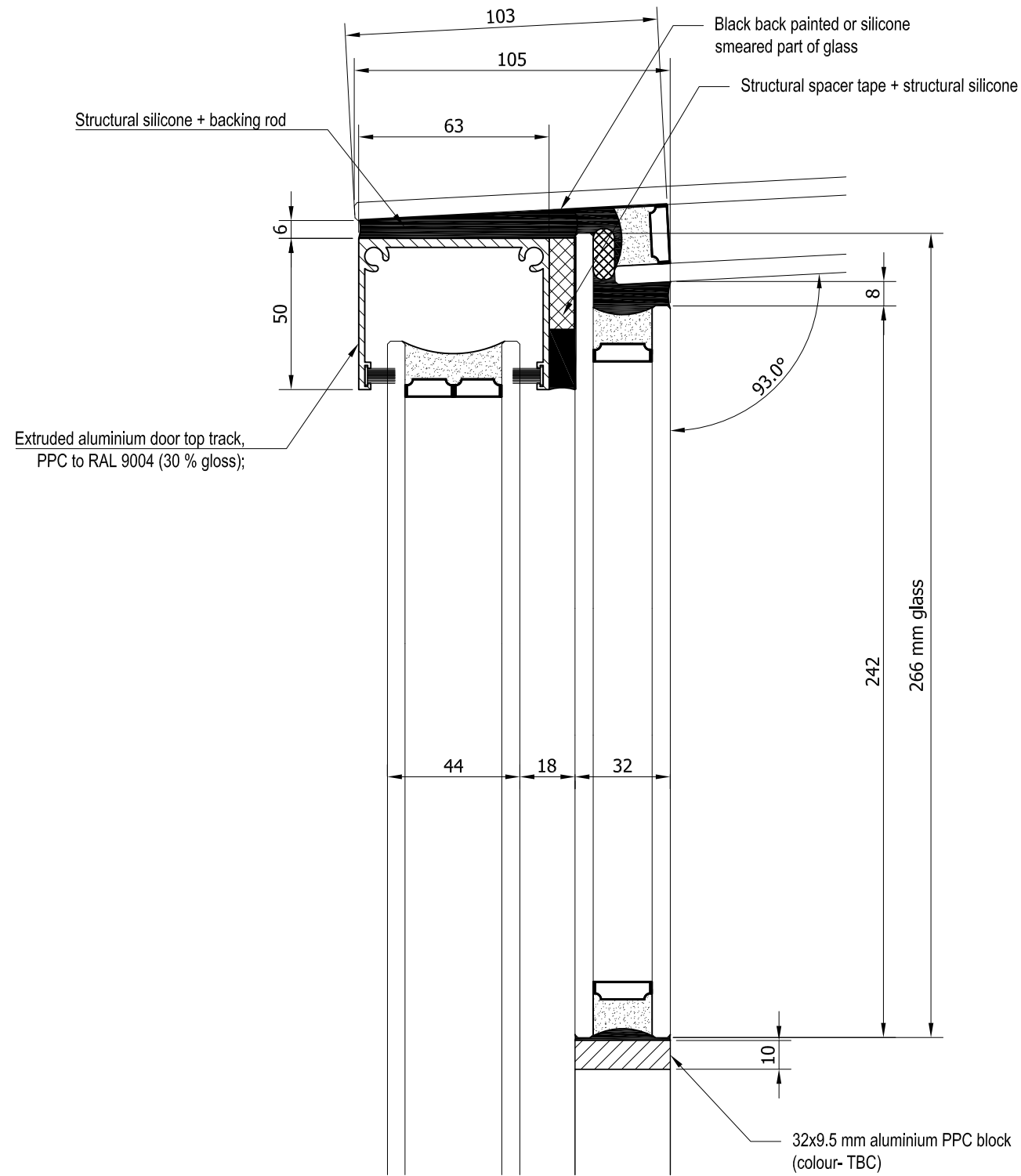
7 SECTION E-E
1:20@A3



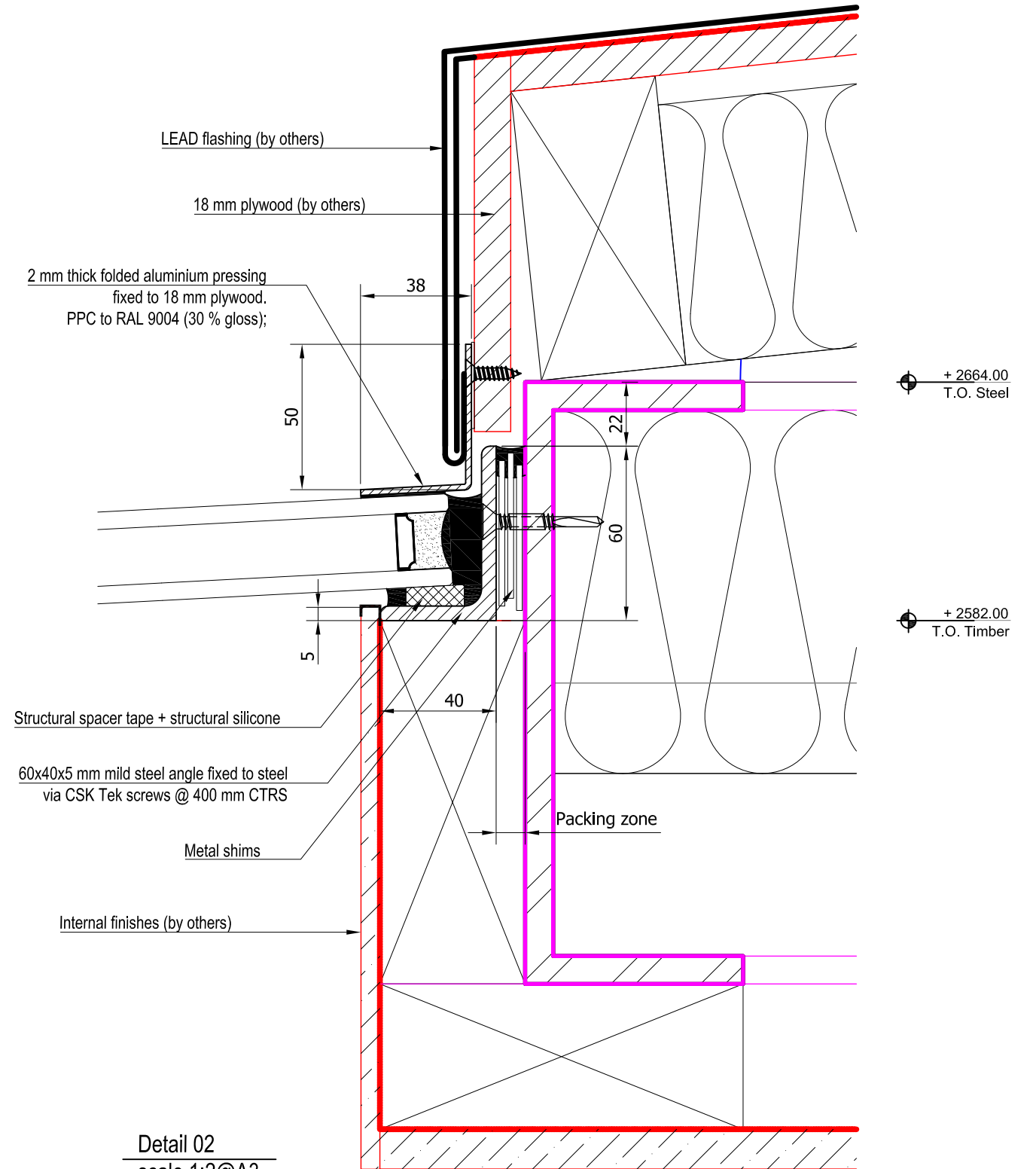
8 SECTION F-F
1:20@A3

PROJECT/SITE ADDRESS: 119 Essex road, London N1	'GH Interior Glass Ltd'	REVISIONS	DATE 14/11/16	DRAWN by D.Z.
			CHECKED by Project M.	
TEL:			SCALE 1:20@A3	REV.
FAX:			DRAWING REF. 006	
			DRAWING TITLE Sections D-D, E-E & F-F	
			DRAWING STATUS	APPROVAL

Note: CDM regulations will apply to status approval of drawings and manufacture will only commence on receipt of 'A' status approval of drawings issued.
 C = TO BE AMENDED - Drawings to be resubmitted.
 B = APPROVED WITH AMENDMENTS - Drawings to be resubmitted with final amendments included.
 A = APPROVED FOR PRODUCTION, NO COMMENTS - Procurement of materials, manufacture and installation to commence.



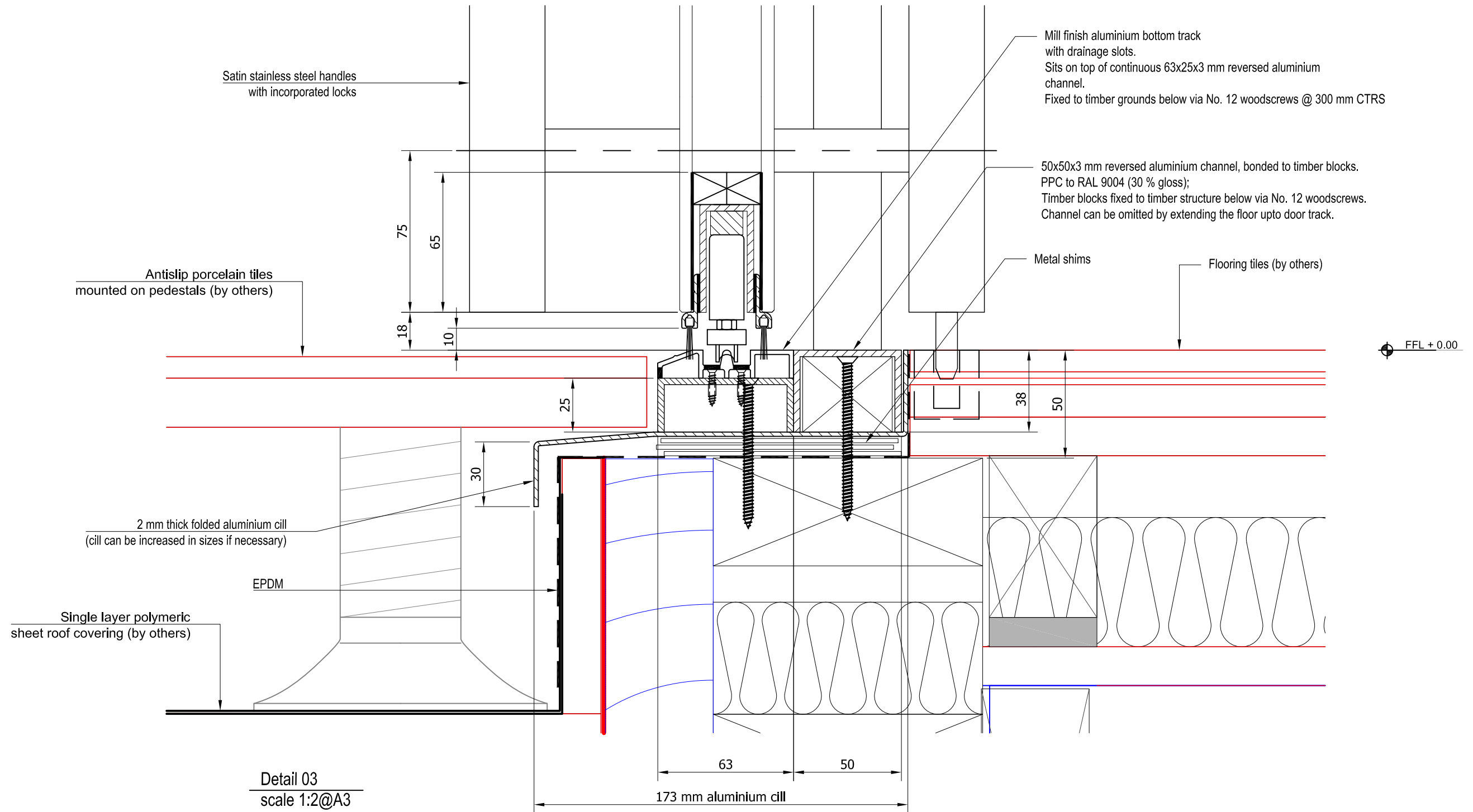
Detail 01
scale 1:2@A3



Detail 02
scale 1:2@A3

PROJECT/SITE ADDRESS: 119 Essex road, London N1	'GH Interior Glass ltd'	REVISIONS	DATE 14/11/16	DRAWN by D.Z.
			CHECKED by Project M.	
TEL:			SCALE 1:2@A3	REV.
FAX:			DRAWING REF. 007	
			DRAWING TITLE Details 01 & 02	
			DRAWING STATUS	APPROVAL

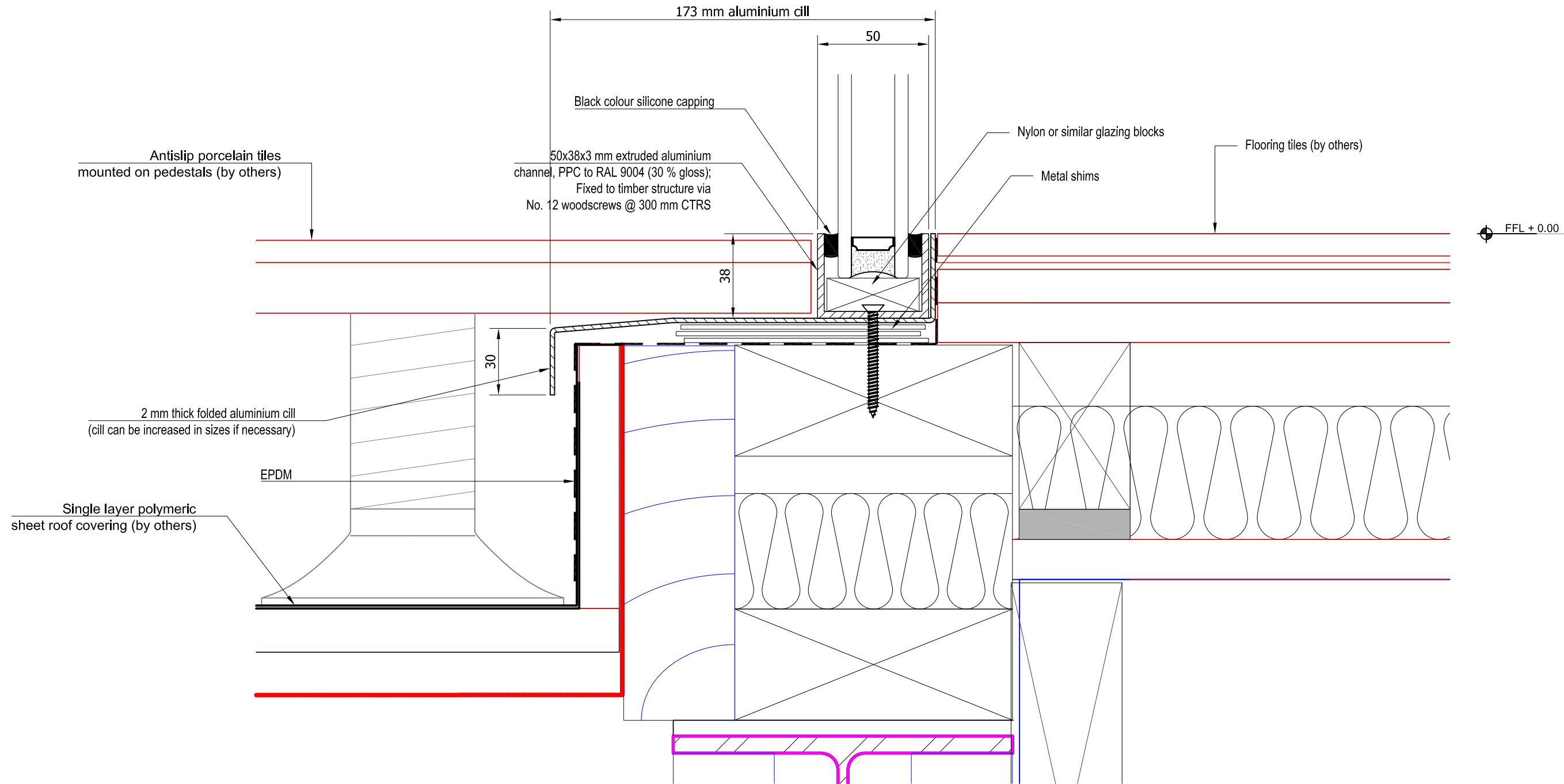
Note: CDM regulations will apply to status approval of drawings and manufacture will only commence on receipt of 'A' status approval of drawings issued.
C = TO BE AMENDED - Drawings to be resubmitted.
B = APPROVED WITH AMENDMENTS - Drawings to be resubmitted with final amendments included.
A = APPROVED FOR PRODUCTION, NO COMMENTS - Procurement of materials, manufacture and installation to commence.



PROJECT/SITE ADDRESS: 119 Essex road, London N1	'GH Interior Glass ltd'	REVISIONS	DATE 14/11/16	DRAWN by D.Z.
			CHECKED by Project M.	
TEL:			SCALE 1:2@A3	REV.
FAX:			DRAWING REF. 008	
			DRAWING TITLE Detail 03	
			DRAWING STATUS	APPROVAL

Note: CDM regulations will apply to status approval of drawings and manufacture will only commence on receipt of 'A' status approval of drawings issued.

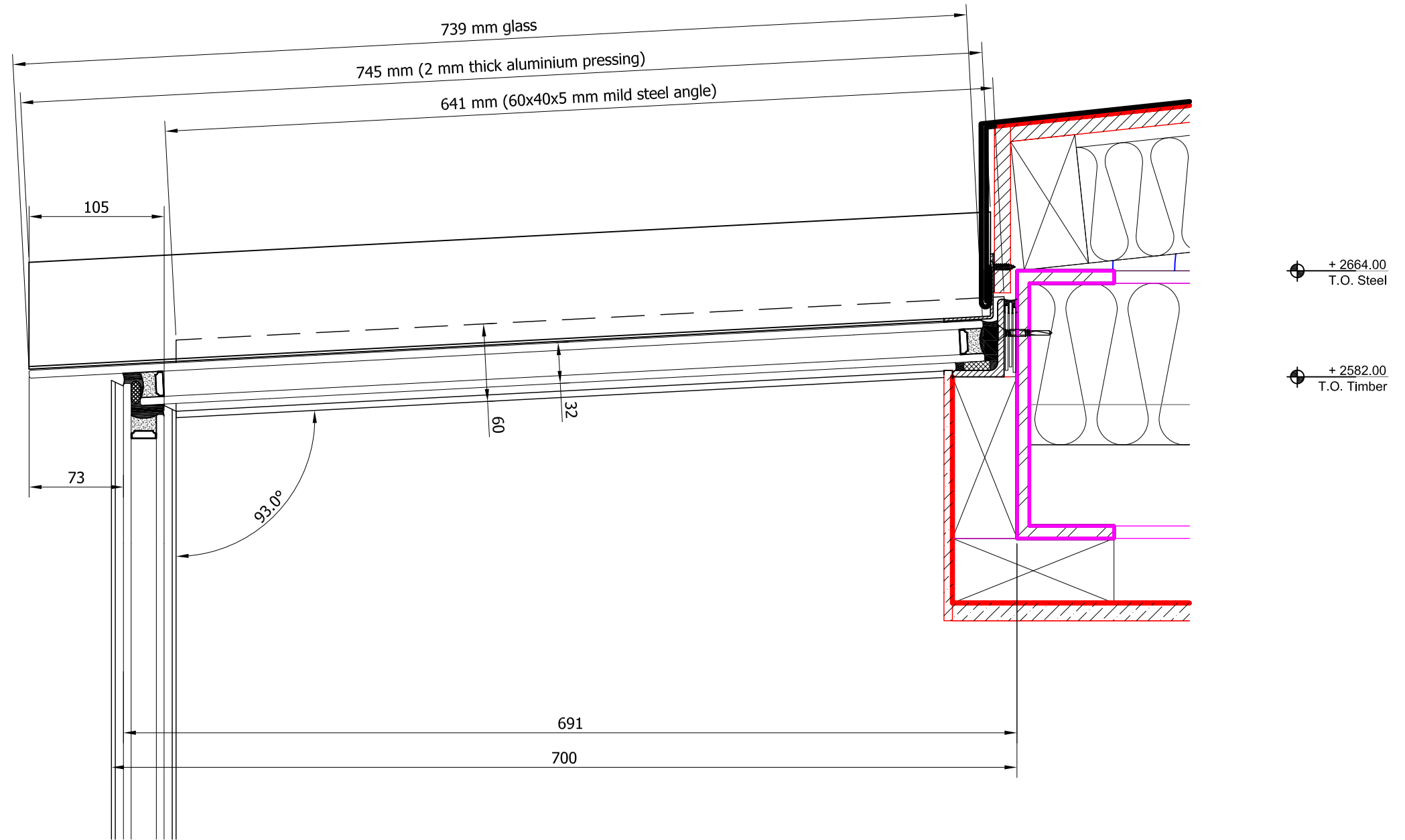
C = TO BE AMENDED - Drawings to be resubmitted.
B = APPROVED WITH AMENDMENTS - Drawings to be resubmitted with final amendments included.
A = APPROVED FOR PRODUCTION, NO COMMENTS - Procurement of materials, manufacture and installation to commence.



Detail 04
scale 1:2@A3

PROJECT/SITE ADDRESS: 119 Essex road, London N1	'GH Interior Glass ltd'	REVISIONS	DATE 14/11/16	DRAWN by D.Z.
			CHECKED by Project M.	
TEL:			SCALE 1:2@A3	REV.
FAX:			DRAWING REF. 009	
			DRAWING TITLE Detail 04	
			DRAWING STATUS	APPROVAL

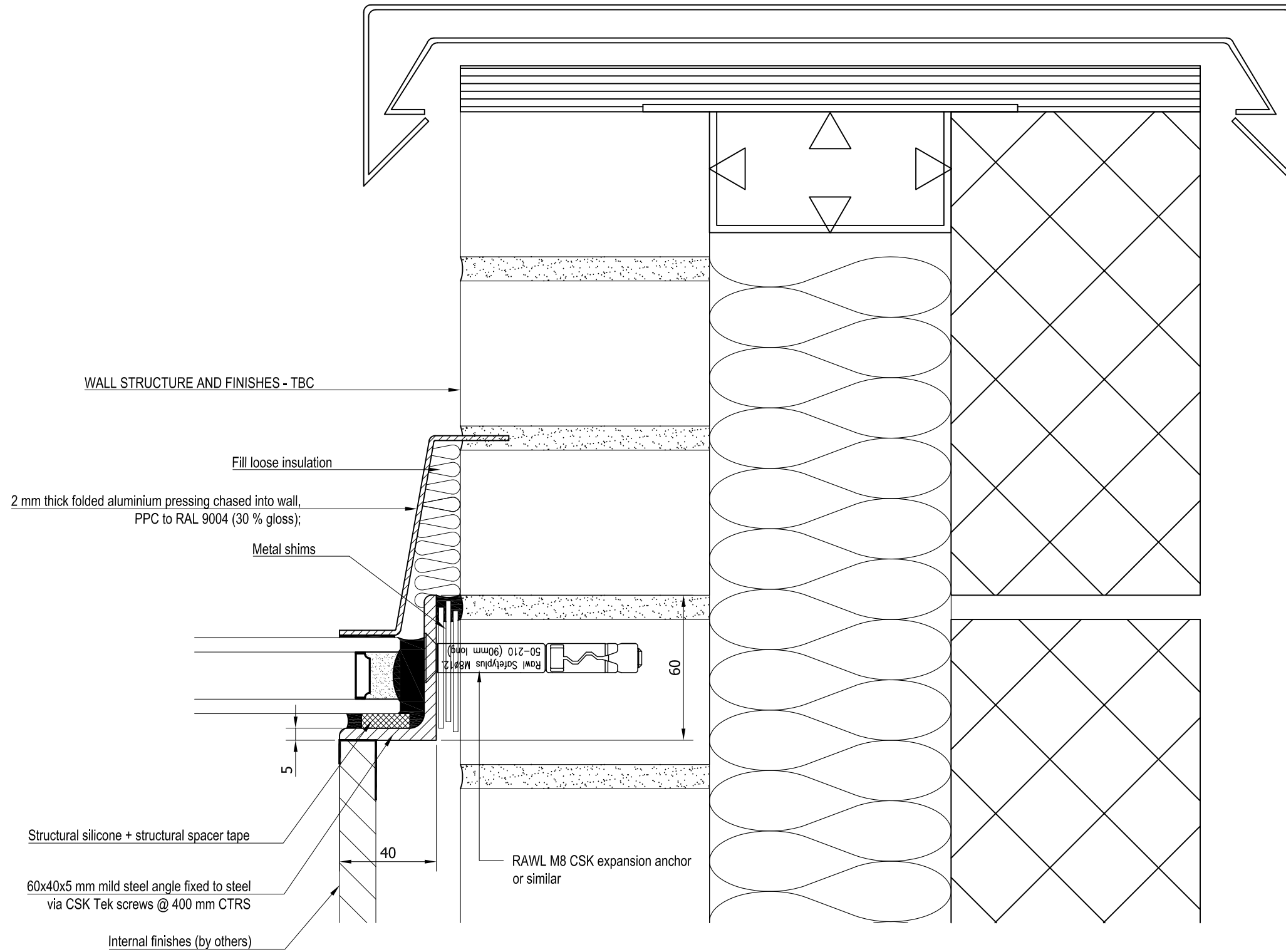
Note: CDM regulations will apply to status approval of drawings and manufacture will only commence on receipt of 'A' status approval of drawings issued.
C = TO BE AMENDED - Drawings to be resubmitted.
B = APPROVED WITH AMENDMENTS - Drawings to be resubmitted with final amendments included.
A = APPROVED FOR PRODUCTION, NO COMMENTS - Procurement of materials, manufacture and installation to commence.



Detail 05
 scale 1:4@A3

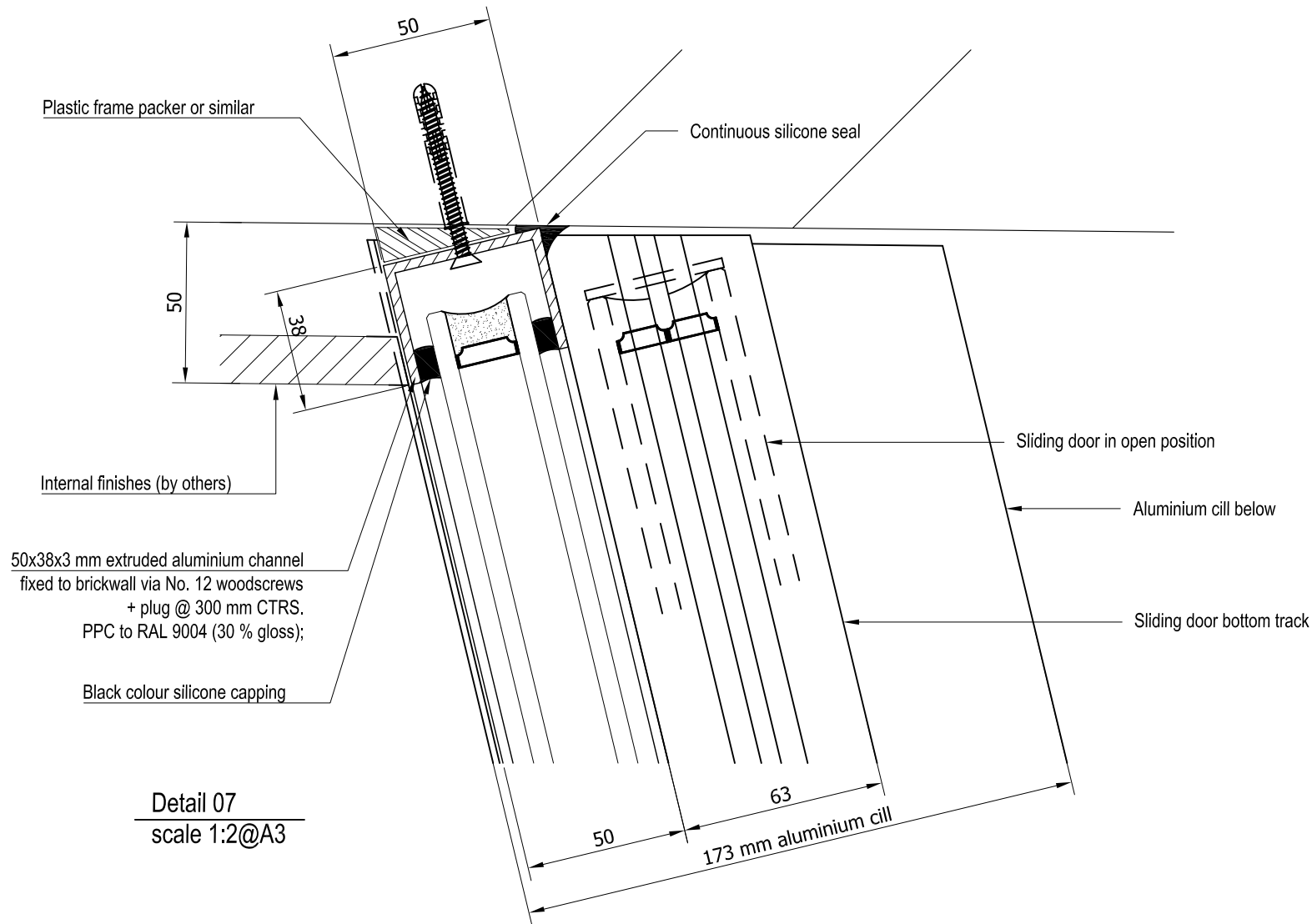
PROJECT/SITE ADDRESS: 119 Essex road, London N1	'GH Interior Glass ltd'	REVISIONS	DATE 14/11/16	DRAWN by D.Z.
			CHECKED by Project M.	
TEL:			SCALE 1:4@A3	REV.
FAX:			DRAWING REF. 010	
			DRAWING TITLE Detail 05	
			DRAWING STATUS	APPROVAL

Note: CDM regulations will apply to status approval of drawings and manufacture will only commence on receipt of 'A' status approval of drawings issued.
 C = TO BE AMENDED - Drawings to be resubmitted.
 B = APPROVED WITH AMENDMENTS - Drawings to be resubmitted with final amendments included.
 A = APPROVED FOR PRODUCTION, NO COMMENTS - Procurement of materials, manufacture and installation to commence.

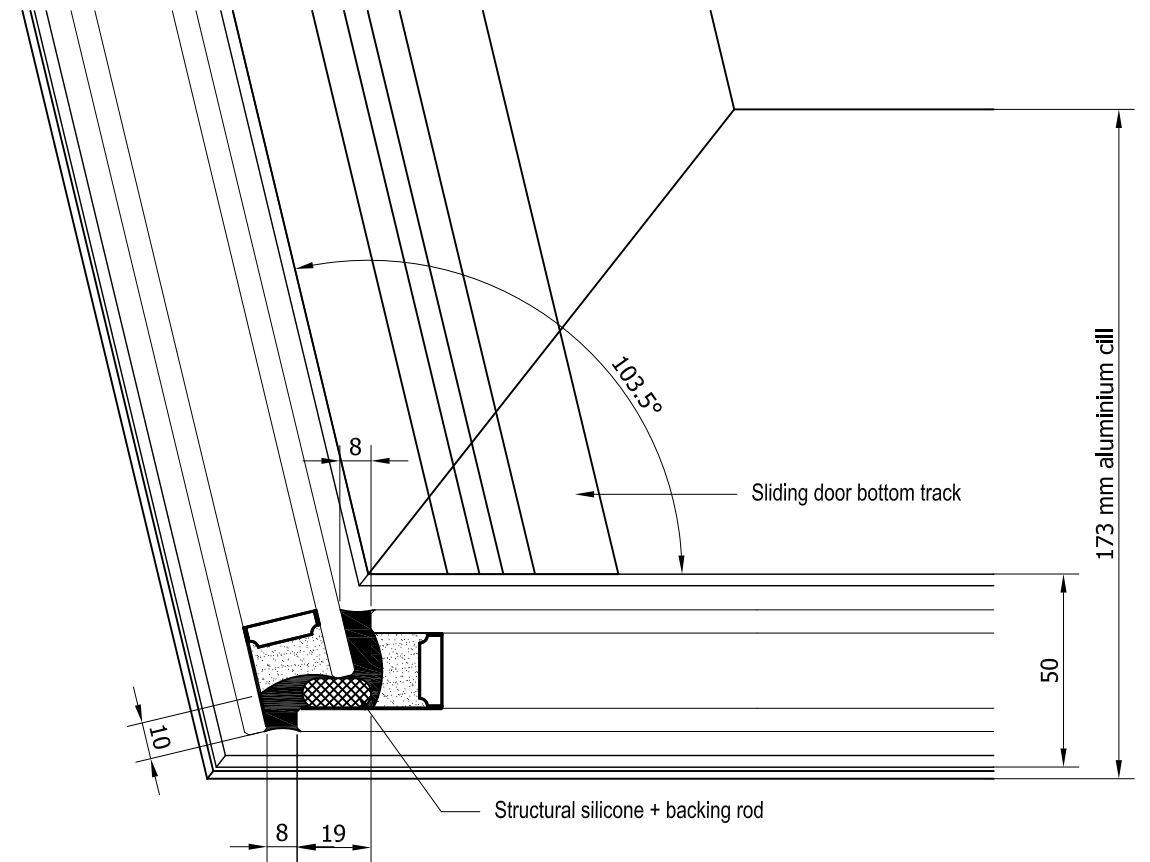


Detail 06
scale 1:2@A3

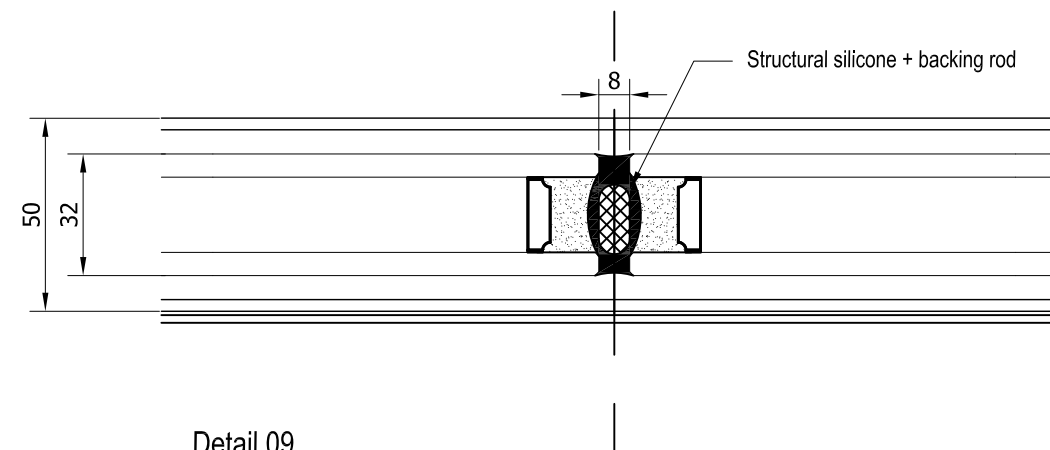
PROJECT/SITE ADDRESS: 119 Essex road, London N1	'GH Interior Glass ltd'	REVISIONS	DATE 14/11/16	DRAWN by D.Z.
			CHECKED by Project M.	
			SCALE 1:2@A3	REV.
			DRAWING REF. 011	
			DRAWING TITLE Detail 06	
TEL:		<small>Note: CDM regulations will apply to status approval of drawings and manufacture will only commence on receipt of 'A' status approval of drawings issued.</small> <small>C = TO BE AMENDED - Drawings to be resubmitted.</small> <small>B = APPROVED WITH AMENDMENTS - Drawings to be resubmitted with final amendments included.</small> <small>A = APPROVED FOR PRODUCTION, NO COMMENTS - Procurement of materials, manufacture and installation to commence.</small>	DRAWING STATUS	APPROVAL
FAX:				



Detail 07
scale 1:2@A3

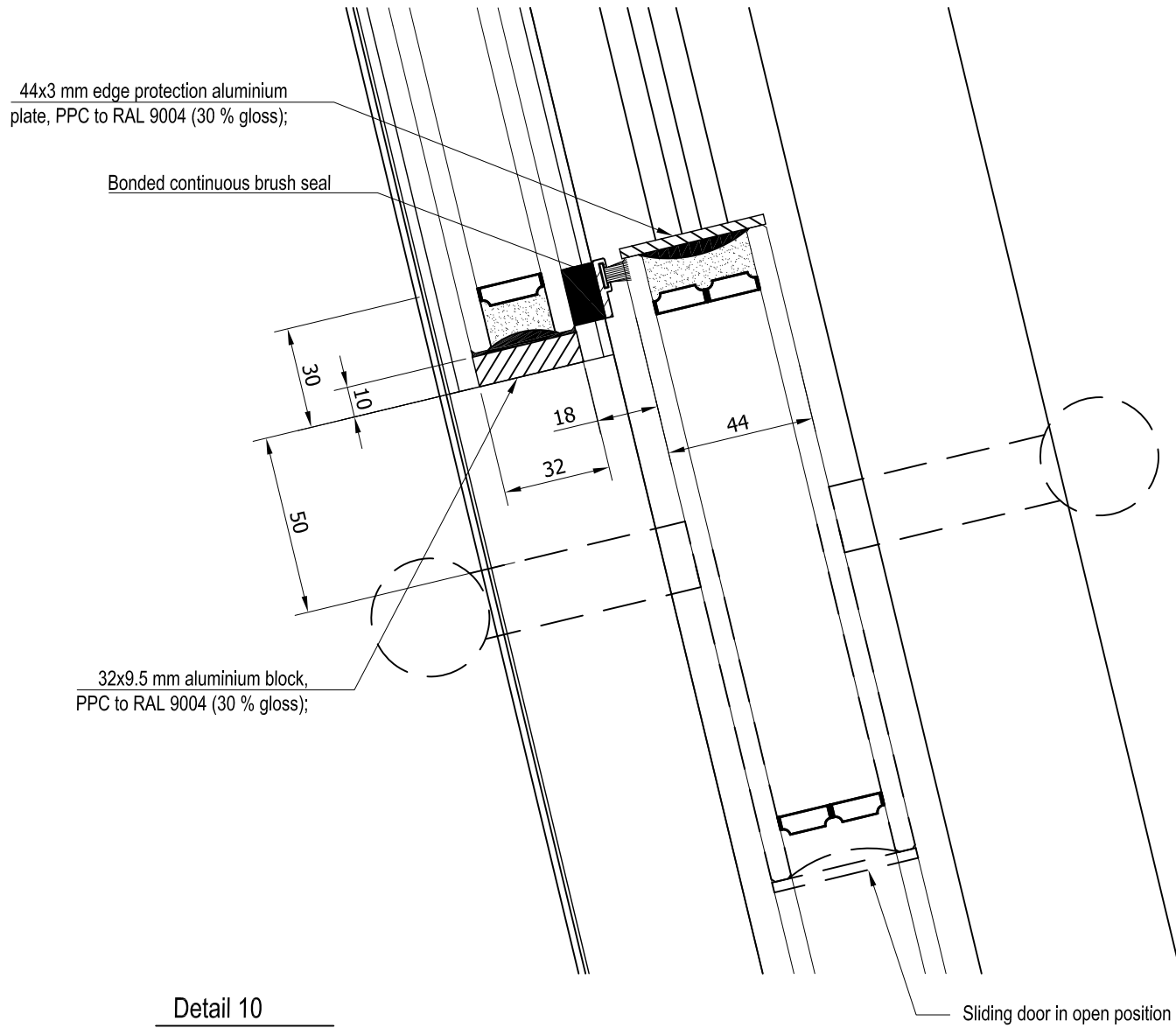


Detail 08
scale 1:2@A3

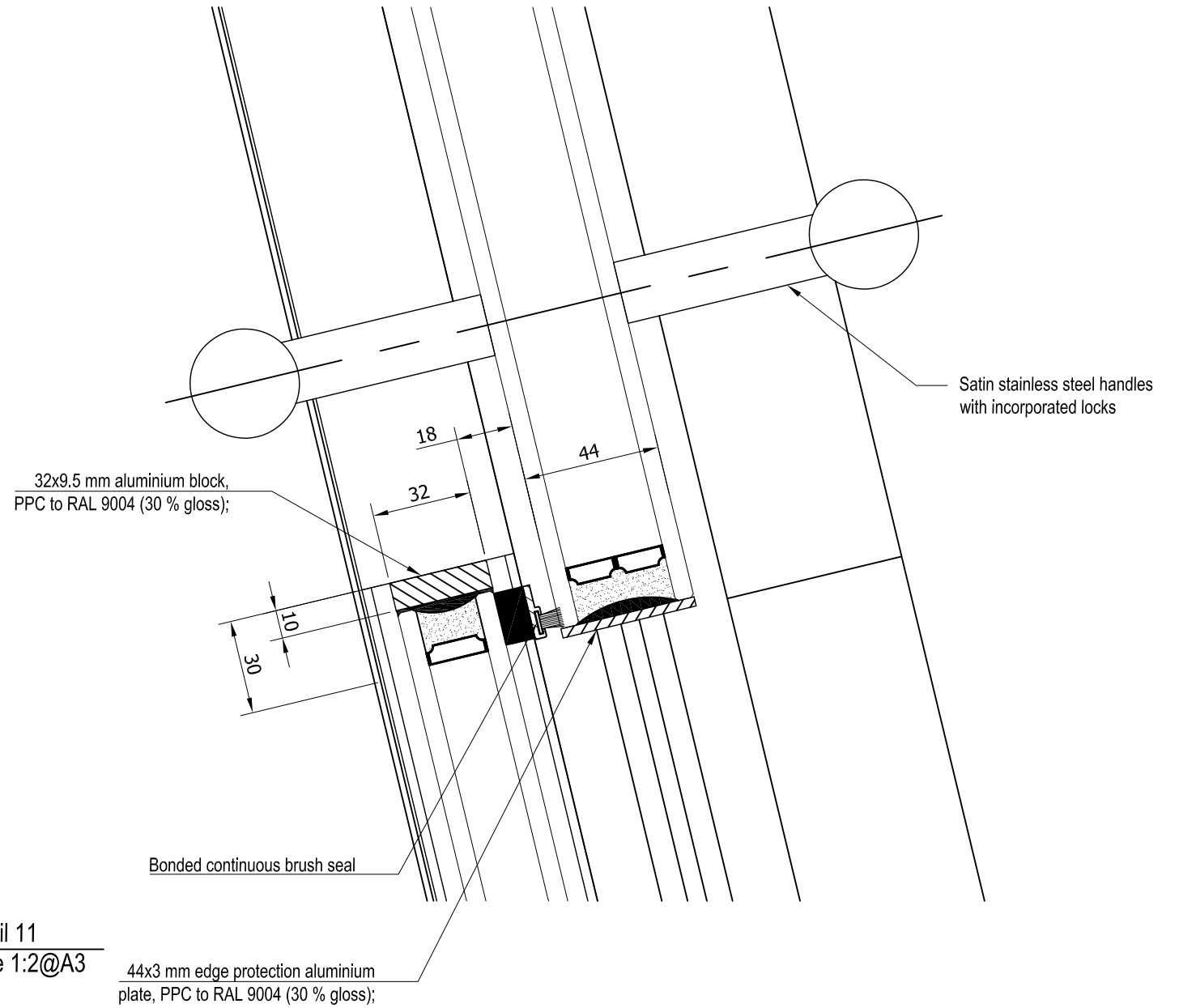


Detail 09
scale 1:2@A3

	PROJECT/SITE ADDRESS:	'GH Interior Glass Ltd'	REVISIONS	DATE 14/11/16	DRAWN by D.Z.
	119 Essex road, London N1			CHECKED by Project M.	
	TEL:			SCALE 1:2@A3	REV.
	FAX:			DRAWING REF. 012	
			Note: CDM regulations will apply to status approval of drawings and manufacture will only commence on receipt of 'A' status approval of drawings issued. C = TO BE AMENDED - Drawings to be resubmitted. B = APPROVED WITH AMENDMENTS - Drawings to be resubmitted with final amendments included. A = APPROVED FOR PRODUCTION, NO COMMENTS - Procurement of materials, manufacture and installation to commence.	DRAWING TITLE Details 07, 08 & 09	
				DRAWING STATUS	APPROVAL



Detail 10
scale 1:2@A3



Detail 11
scale 1:2@A3

PROJECT/SITE ADDRESS: 119 Essex road, London N1	'GH Interior Glass ltd'	REVISIONS	DATE 14/11/16	DRAWN by D.Z.
			CHECKED by Project M.	
TEL:			SCALE 1:2@A3	REV.
FAX:			DRAWING REF. 013	
			DRAWING TITLE Details 10 & 11	
			DRAWING STATUS	APPROVAL

Note: CDM regulations will apply to status approval of drawings and manufacture will only commence on receipt of 'A' status approval of drawings issued.
C = TO BE AMENDED - Drawings to be resubmitted.
B = APPROVED WITH AMENDMENTS - Drawings to be resubmitted with final amendments included.
A = APPROVED FOR PRODUCTION, NO COMMENTS - Procurement of materials, manufacture and installation to commence.